

---

## Inside this Issue

---

# 1

**MSL Appoint New MD  
New Products - 7010-D**

# 2

**Solo News  
Solo Special Offer  
Exhibition News  
Datascan Instant**

# 3

**Application Stories  
Aeromatic Fielder  
University of Utrecht  
Rutherford Laboratories**

# 4

**New Orchestrator Driver  
Meet Acquisition Systems  
New Swiss Distributor  
Feedback/Next Issue**

Measurement Systems Ltd  
16 Kingfisher Court  
Newbury,  
RG14 5SJ  
Tel: + (44) 1635 576800  
Fax: + (44) 1635 31023  
[www.msl-datascan.com](http://www.msl-datascan.com)



## MSL Appoint New Managing Director

MSL has appointed Mr Knut Bertelsen as their new Managing Director. Knut has been involved with MSL since 1984, when the Company he was running at the time became a Distributor for MSL products in Sweden.



*Mr Knut Bertelsen*

"MSL has always been a good company to work with and I am excited to be able to work for the Company. MSL's turnover has been fairly constant over the past years and my task is to make sure that the turn over will increase. The staff of MSL has always been focused on customer satisfaction and have therefore been able to create a very faithful and supportive customer base"

"It is very impressive to think that there are more than one million Datascan channels that have been delivered over the years. This gives me a strong confidence in the Company and the future".

# NEWS

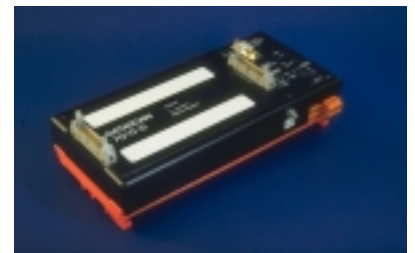
## New Products

During the next 12 month period MSL will enhance their current product range of Datascan and also try to complement the product range with other imported products. An example of this are the Acqiris products which have been such a success.

### 7010-D

We are pleased to announce the release of a new addition to the Datascan 7000 Range of Products.

The Datascan 7010-D Digital Processor will provide a cheaper solution for customers who require Datascan 7000 Digital only solutions and up to 16 Datascan Digital Modules (Datascan modules 7031/7035 & 7036) can be connected.



This Module is based on the 7010 Processor and uses the standard Datascan 7000 Architecture to provide reliability and ease of use.

Using the modules Network Port, Analog Processors can still be connected giving added flexibility.

Please contact our Sales Department should you wish to receive further information on this product.

## Solo News

The Solo S-7188 and S-7188D Embedded Controller Modules now come with 512K Flash ROM as standard (rather than the previous 256K) - Double the memory!!!



*Solo S-7017 & S-7188D*

Solo S-7017 and S-7018 modules have also both been updated. The S-7017 now has an option to work in "Fast Mode" as well as the standard mode of operation. This is possible by using a lower resolution (12 bit rather than 16) with slightly reduced accuracy ( $\pm 0.25\%$  where as normal mode is  $\pm 0.05\%$ ). The speed difference is up to 100 samples/sec in Fast mode against 10 samples/sec in normal mode.

The S-7018 now supports L & M type thermocouples and extended range on other types.

For more information on the updated modules or any other of our Solo products please contact our Sales Department.

## Special Offer

Throughout February + March we will offer a 10% discount on all orders received for **ANY** Solo module.

Please call today to check out pricing and availability. This offer must end on March 31st 2001...

## Our Man in Milan

Our Italian Distributors, Tecnoel, recently exhibited at the Bias Exhibition in Milan. A large part of the stand was devoted to our products and MSL Support Engineer, Rob Farley, was there to assist Tecnoel. Datascan, Solo and Orchestrator attracted a lot of attention.



*Lino Todeschini & Rob Farley*

## Where to see us next

MSL will be attending the Sensors Measurements & Instrumentation Exhibition at the NEC, Birmingham which takes place on the 14th and 15th of February. The Exhibition is held in conjunction with the International Conference on Sensors & Transducers. We will be showing our Datascan, Solo, Acqiris Digitisers and Orchestrator Software at the Exhibition.

We will also be exhibiting at the Instrumentation Analysis and Testing Exhibition at the Heritage Motor Centre, Warwickshire on Wednesday 14th March 2001. Our full product range will be available to see.

If you would like tickets to either of these Exhibitions please contact either Karen or Katie at our Newbury offices who will be able to assist you.

## Instant Success

The Introduction of the Datascan Instant Package and reduced versions of Orchestrator has proved itself through the increased number of sales. The Instant packages consist of Orchestrator 32 software and a Datascan Processor Module.

We are seeing an ever increasing demand for these products.

One such demand comes from a new customer of MSL, Aeromatic-Fielder Ltd based in Eastleigh who are involved in the Agricultural Industry.

Aeromatic-Fielder were already in possession of a Datascan module but needed some software to run the device. Through visiting our website ([www.msl-datascan.com](http://www.msl-datascan.com)) they were able to download a copy of Dalite which was sufficient enough for test purposes.

A number of Datascan Instant packages are now being used by Aeromatic-Fielder. They have replaced several old and costly systems.



*Instant at Aeromatic Fielder*

The new Datascan Instant packages are used to record data on a range of pharmaceutical mixers and fluid bed dryers.

Aeromatic-Fielder are currently using their Orchestrator 32 systems with either the new external RS232 driver, or the standard Datascan Software.

Matthew Pead from Aeromatic Fielder says "The system is easy to control and trending is very good. The data export facility is the main reason for the purchase, and we are extremely happy with the reliability and accuracy of the system".

## Datascan & The Human Brain



*The Intelligent Datascan 7000 data acquisition system used to investigate the human brain....*

At the University of Utrecht in The Netherlands research is carried out on all aspects of the human body. One of these investigations concerns the measurement of fluid flow through the major veins of the human brain and the way these flows interact with each other.

The University contacted MSL's Dutch Distributor, Berendsen PMC, and their Instrumentation Division has designed and built a system based on Datascan 7000. The system exists of a vertical frame with three containers that can be moved up and down using a special construction.

Inside the containers is a special fluid that is brought into the veins of the human brain via 6 flowmeters and special flexible tubing. By moving the containers up and down the static pressure of the fluid can be affected and the flow through the veins of the brain is regulated.

The pulse outputs of the 6 flowmeters are connected to a Datascan 7041 module. The 7041

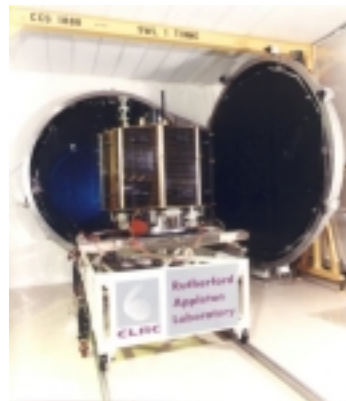
calculates the average pulse length for each of these 6 signals thus giving the rate of flow through different veins.

A 7011 network interface module is used to connect the system to a PC and here the measured data is stored on the hard disk for future calculations and analysis.

A big advantage of the Datascan 7041 module for this system is that the module is not only able to measure digital (status) signals, frequency and counting, but also measures period length giving a very accurate measurement using the low-frequency signals (5-6Hz) from the flowmeters used in this system.

## Datascan & Space Testing

The Space Science & Technology Department (SSDT) at Rutherford Laboratories in Chilton has been a customer of MSL since the early 1990's. They have progressed from using a Magus system to the latest Orchestrator software and currently have over 50 Datascan modules running on two systems.



*Vacuum Chamber at SSDT*

The facilities at SSDT have been designed for the assembly, integration, development testing and formal flight qualification of instruments for space research,

aerospace components and sub-systems.

The facilities range from vibration to thermal vacuum chambers, which are equipped with the latest technology including clean room conditions, computer-based control and a data acquisition system based around MSL's Orchestrator software and Datascan modules.

7020 and 7021 modules are used for temperature monitoring (both PRT and Thermocouples) whilst digital modules (7035's) are used to control heating within the vacuum chambers.



*Datascan Cabinet at SSDT*

Monitoring in the Vacuum Chambers can be run continuously, some tests need to be done for 24 hours whilst other tests can last for 2/3 months. The Vacuum Chambers simulate the conditions that the equipment will be put under in Space and temperature testing on the equipment within the Chambers is carried out.

The temperatures can vary from -50°C to +60°C in a smaller chamber and -190°C to +170°C in the bigger chamber that was installed in 1996.

This range of temperature relates to the position of the Satellite at any point in the Earth's Orbit.

Rutherford Laboratories are pleased with the reliability and accuracy of the data given from the Datascan system. To be sure that they are always using the latest Orchestrator



software and can receive support from MSL they always keep their Orchestrator Software Maintenance contract active.

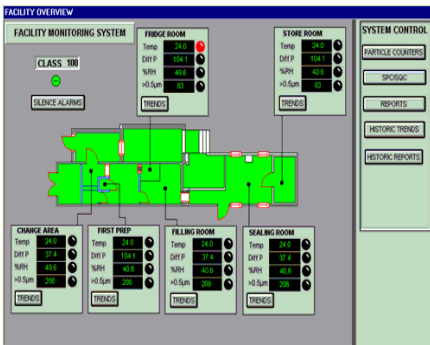
## New Orchestrator Driver

We have recently released a Generic RS232 Driver for the Orchestrator software packages. This new driver offers communication to any external hardware device that uses an ASCII protocol format.

Configuration of any Digital or Analog I/O channel is achieved using the familiar Orchestrator Menus.

## The MSL Network

MSL has during the past years built up a network of System Integrators, Business Partners and Re-sellers. It is our aim to introduce our partners through our newsletter. The first company we would like to introduce is Acquisition Systems Ltd.



ASL Facility Monitoring System

Acquisition Systems have found their market niches in Facility Monitoring Systems, Environmental Monitoring Systems, Event Recorders and Test Bed Loggers using the Datascan 7000 series for sensor input and for control output. The reasons for choosing Datascan 7000 series are the accuracy, flexibility of the modules and the

concept of distributed intelligence.

With years of experience in the design, production, sales and marketing of high performance data acquisition and control equipment, the staff at Acquisition Systems are able to offer assistance at all levels of project implementation.

From the lowest level measurement techniques to highest level management reporting, Acquisition Systems can offer expertise and help in providing cost-effective solutions.

Complex procedures can be developed and tested by engineers and then hidden behind a simple screen, reducing operator intervention to a single key stroke or mouse click.

Acquisition Systems prides itself on its quality of support, with knowledgeable staff who are able to offer assistance at all stages of project implementation.

## Swiss Distributor appointed

We are pleased to announce that Swahn Engineering have recently been confirmed as our new Distributor in Switzerland.

Connie Swahn, Managing Director, has a vast experience of the Data Acquisition market and we would like to take this opportunity in welcoming his Company to our successful team of Distributors.

**Swahn** Time to watch the  
engineering Swiss Roll...

## Feedback or new reader subscription

If you would like to receive further copies of this newsletter or if you

would like any further information on any of our products or articles featured please Email us or alternatively fill in your details and fax this back to us on:-

Fax: + (44) 01635 31023

## Newsletter by Email

This newsletter can also be sent via Email, if you would prefer to receive your next copy electronically please Email us at :-

info@msl-datascan.com

## Next Issue

The next MSL newsletter will be issued in the summer. If you would like us to include an article on your application or have any feedback that you would like to share with other Datascan/Orchestrator users please contact Katie Peters via our Newbury offices.

Fax Back to + (44) 01635 31023

|                  |  |
|------------------|--|
| Name             |  |
| Company          |  |
| Email address    |  |
| Tel No:          |  |
| Product Interest |  |