

Spring 2000
Volume 2, Issue 2

Inside this Issue

- 1 Orchestrator – repackaged and new a major release V2.0
- 2 Datascan Solo – Embedded Cotroller Module S-7188
- 2 Acqiris Cougar – How fast can you go...
- 2 IMEX – New Irish distributor appointed
- 2 Lookout! National instruments. Driver for 7000 available
- 3 Datascan Instants New Starter combinations
- 3 DasyLab New Driver for Solo
- 3 Forthcoming articles and events
- 4 Orchestrator Features listing
- 4 Feedback - Fax back And Finally –

Measurement Systems Ltd
16 Kingfisher Court
Newbury, Berkshire, RG 14 5SJ
Tel : +(44) 01635 576800



Orchestrator™

Version 2.0 suits you sir?

A major new V2 of Orchestrator is released this quarter in what amounts to a re-launch and rethink to the entire software offering.



The product has significantly enhanced functionality, including:

- Now supports Win98 and 2000 in addition to the NT platform
- New Configurable monitor with graphical shapes and elements
- Enhanced Windows look and feel
- OPC Client included in base package
- Software or Hardware based security
- Active X Support

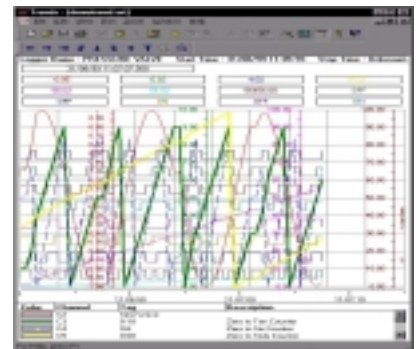
In addition the range has been packaged into a number of products supporting various channel counts and loggers, these being...

- 32 Channels – 4 Loggers
- 64 Channels – 8 Loggers
- 128 Channels – 16 Loggers
- 256 Channels – 32 Loggers
- Unlimited channels and loggers

This brings the entry level of Orchestrator down to £500 with upgrade pricing as a system expands opening up this highly powerful SCADA system a whole range of new applications while maintaining a full Client Server application at the top end.

The following screen shots of trending, monitor pages and alarms are examples.

More @ www.msl-datascan.com



(Continued on page 2)

Dascan Solo

Embedded Controller Module

The S-7188 embedded controller module opens up a whole New World of applications at very low cost and high flexibility to the user.

With an on board 80188 40MHz processor and 256 k of RAM as well as Four (4) serial ports the user can



download a program from the PC which can be run in real-time on the controller.

The user can then apply the product as a small system controller or as a local stand-alone controller.

Typical Applications of this versatile module are:

- Local Real Time Controller
- Remote Control
- Protocol Converter
- Interface Controller

The programs themselves can be developed in either standard C or Basic with the included language.

NI Lookout™ driver

Dascan 7000 driver

One of our Systems Integrator partners Acquisition Systems Ltd has developed and promotes a full driver for the popular software from NI – namely Lookout.

This enables Lookout to communicate to the full range of Dascan 7000 modules and further details can be obtained by calling ASL directly on

Acquisition Systems Ltd
Tel: +44 (0) 1252 815001

IMEX in Ireland

New Distributor for Irish marketplace

In December of 1999 MSL had the pleasure of appointing IMEX as a new distributor for Ireland.

With two offices in Ireland and one in Scotland IMEX provide professional product support and will market our range to a broad range of Data Acquisition customers.



They are located on the World Wide Web at www.imex.co.uk so please feel free to contact them.

DALITE

Update

Dalite for Windows is still available for Dascan 7000 and will not be further updated due to the developments with our popular Orchestrator software.

Acqiris Cougar 2GS/s

How fast can you go?

Acqiris - NEW 4-channel Cougar Digitizer samples at 2GS/s

The **new** compactPCI **Cougar** range from Acqiris provide packaged, 4 channel digitizer systems from 500MS/s to 2GS/s sampling speed with 128K acquisition memory.

Each **Cougar** system is delivered



with a 3-slot compactPCI crate, PCI interface, AcqirisLive software and software drivers for easy system integration.

Memory options extend performance to 4Msamples /channel and can be segmented for up to 4000 sequential acquisitions with less than 500nsec dead time between segments.

Both **Cougar 500** and **Cougar 1000** systems have expansion capability up to 8 channels.

Larger systems are available with 5 and 8 slot crates providing up to 28 channels at 1GS/s per channel in a single unit.

Acqiris offer high-speed waveform digitising solutions for both PC and compactPCI platforms through MSL in the UK with options for extended and battery-backed memory, embedded processor and rack-mounting.

Orchestrator continued...



This new range family of products features software based security for the first time

Although the dreaded “dongles” are available at extra cost for those who wish to maintain this type of administration of software.

Software security enables the software to be installed before a quick phone call to MSL for an installation number making this and future upgrades more convenient.

We have also taken the opportunity of developing a demonstration version of Orchestrator.

The demo software allows full functionality with pre-built and modifiable configurations.

It runs with all features enabled for up to 1 hour before timing out.

(Continued on page 4)

DasyLab for Solo

New driver on the way

By popular demand a driver for the popular DasyLab software package will be made available soon for the complete range of Datascan Solo modules.

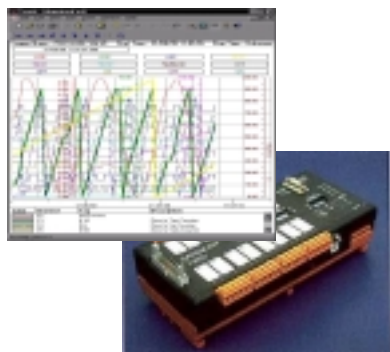


The driver adds to the existing 7000 driver already available.

Datascan Instants

Wake up and smell the I/O

A new range of starter packs will be released over the coming months, combining modules from **the Datascan 7000** range and the repackaged Orchestrator software at starter prices.



The new combinations will be based on the 72 and 73 series units. These incorporate I/O and processor in a compact unit, such as the 7320 unit...

In conjunction with the 32 channel versions of the powerful **Orchestrator** software they provide all that is needed for a small Data Acquisition product out of the box at very competitive prices.

Orchestrator

technical note

Multiple drivers to Orchestrator

One of the main advantages of the Orchestrator package is the ability to run multiple I/O systems into one PC.

This means in practice that both the Datascan 7000 and Datascan Solo ranges of I/O can be utilised providing a system best suited to the application at hand.

It also provides the ability to add on the low cost Solo modules to an existing Datascan 7000 / Orchestrator installation.

This is achieved by utilising two types of driver...

1. Direct driver for Datascan 7000
2. OPC for Datascan Solo

In practice the only constraints may be a lack of two spare serial ports on the computer in question.

Check the PC first, however this can be overcome by adding a suitable ISA or PCI based add on card or even a USB to Serial converter now available for Laptop installations

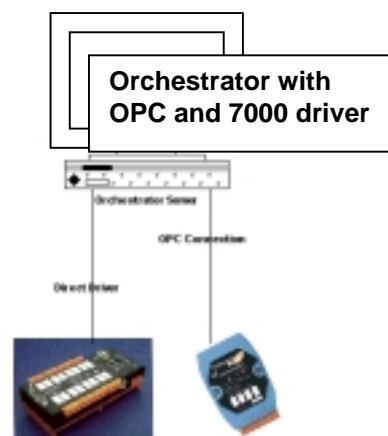
Once the hardware is installed the Datascan 7000 units are configured through the standard Orchestrator interface.

The Datascan Solo units require the installation of the Solo OPC Server for connection to the Orchestrator OPC Client.

The Orchestrator OPC Client enables any OPC based I/O product to be connected to the software utilising standard OPC Server browse, OPC Read and OPC Write commands depending on hardware used.

Technical support Email:

support@msl-datascan.com



Forthcoming articles and events

Next Newsletter

Datascan Solo – new modules

Update on Orchestrator

Real Applications

Datascan 7000 update

Events

7th to 9th November 2000

NEC - Birmingham

Manufacturing Week

UK's biggest manufacturing applications event.

6th to 8th June 2000

NEC - Birmingham

Environmental Technology

Water and waste treatment technology

See www.reedexpo.com for more details on this and other events

And finally

Out with the old, in with the new!

We've come up with a new logo for use on all corporate literature and products in the future, signifying a new wave of energy within MSL we believe it provides an up to date and fresh look.

What do you think?

The old.... and the new...



Support Web

Online technical support

Due to go live in the next few weeks is the first part of MSL's new Technical Support Web.

Designed for all customers with software or systems maintenance by registration only the web will feature articles and information on all our products and should include:

- Technical support notes
- FAQ's on Hardware and Software
- Downloads and Bug Fixes
- Support bulletin board

Backed by an extensive search facility to assist in fault finding.

www.msl-datascan.com

Orchestrator cont'd



Follows is a full features listing for Orchestrator:

- Win98/2000 and NT compliant
- Datascan 7000 Driver built in
- OPC Client built in
- No programming required
- Alarm handling and annunciation
- Data logging to hard disk
- Multiple data loggers
- Trending of real time and logged data, multiple trends
- Basic channel monitors
- Configurable graphical monitors
- Hot button linking
- Export of data to Excel or File
- Optional ODBC interface
- Additional I/O drivers available
- Automatic start-up of processes
- Calculator channels for I/O processing
- User Analogs Digitals channels
- Variable hardware channel counts
- Client Server version available
- Software or optional hardware based security
- ActiveX support
- OLE and OPC support
- Optional view clients available
- Optional IE Explorer Server
- Optional PID module
- Optional Sequencer module

In addition we have now made the following free materials available to all interested parties

- Demo CD 1 hr runtime
- Lotus ScreenCam walk through
- PowerPoint show

Go to our web site for further information and downloads

Feedback or new reader subscription

If you would like to receive a copy of this newsletter or if you would like any further information on any of our products or articles featured please Email us or alternatively fill in your details and fax this back to us on

Fax +(44) 01635 31023

Newsletter by Email

We also intend to use e-mail services for this publication in the future.

If you are interested in this service please fill in your e-mail address below or e-mail us at

info@msl-datascan.com

Fax Back	
Name :	
Company :	
Email Address:	
Tel Number :	
Product Interest:	