

Orchestrator

Real time information system

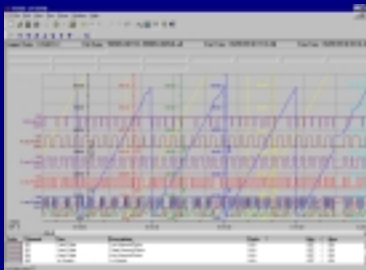
Product features

- 32-bit operation under NT, Windows 95/98 and 2000
- Real time data acquisition
- Client/server network operation
- Range of I/O device drivers
- On-line context sensitive help
- Remote access
- Datascan 7000 driver
- OPC Client built in

Optional modules

- Visual Environment – Full graphics generation
- PID Module – Three term control module
- Drivers to other Hardware I/O systems upon request
- Active X controls for deployment

All Orchestrator software is Year 2000 compliant and comes with full documentation on CD-Rom



MSL Contact details
Tel – 01635 576800
Fax – 01635 31023

Email - sales@msl-datascan.com
Web – www.msl-datascan.com

Overview

Orchestrator is an advanced real time information system that can be profitably used in business, technical and engineering applications. Its flexibility and expandability make it easily adaptable to a wide range of applications:

- Process Monitoring and Control
- Energy Management
- Power Generation and Transmission
- Mechanical and Electrical Test
- Environmental & Temperature Monitoring
- Laboratory Testing
- Well Logging & Rig Monitoring

Data collection and disk logging

Expandable to 10,000 channels of data I/O from a variety of instrumentation and systems

- Multiple current independent loggers (see version)
- Period & event loggers
- Period-until-event loggers
- Pre- and post-event loggers
- Shift loggers

Advanced Alarm Processing

An advanced built in alarm package provides

- Alarm processing & logging
- Individual priority for alarms
- High and low alarms & events with warning levels
- 32-character alarm messages

Trending

Orchestrator allows data presentation through a powerful trending package providing

- Up to 32 data channels on each trend display
- Multiple trends displayed/updated simultaneously

Configurable Monitor

A powerful monitor page allows alternative graphical representation through

- Customisable LEDs, gauges, toggles, etc.
- Any data channel can link to an object
- ActiveX controls