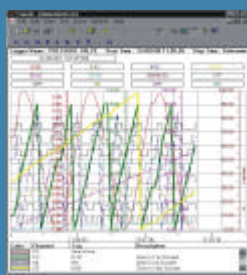
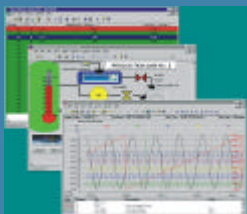


# Datascan

# *instant*



## **Price List**

Datascan Instant 8 @ £1,150  
Datascan Instant 16 @ £1,150  
Datascan Instant 32 @ £1,295

Please contact us for  
further information on:

Tel. 01635 576800  
Fax. 01635 31023

E-mail. [info@msl-datascan.com](mailto:info@msl-datascan.com)  
Visit us: [www.msl-datascan.com](http://www.msl-datascan.com)

The Datascan Instant packages all include the Orchestrator<sup>32</sup> software package.

This package is suitable for Windows 98/NT Operating systems and will support up to 32 I/O channels. Other features include 32 User Analogs, User Digital's and History Channels. Data logging is achieved via 4 simultaneous loggers. Unlimited trending is available as well as 128 Calculator Channels, Datascan Driver, OPC Client and Configurable Monitor Facility – software secured.

All three Instant packages include a 24V DIN rail mounted power supply and one RS232 PC to Datascan serial cable.

## **The Datascan Instant 8 channel system consists of the following hardware:**

One 8 channel expandable Measurement Processor. Including processor, battery backed RAM 14/16 bit ADC, isolated RS232 host communications port, isolated RS485 network interface and 8 input channels for Voltage, Thermocouples, Strain, PRT's, Resistance and 4-20mA Transducers. Local expansion bus. For use with 7020/21/31/35/36/50 scanner modules.

## **The Datascan Instant 16 channel system consists of the following hardware:**

16 channel expandable Measurement Processor. Including processor, battery backed RAM, 14/16 bit ADC, isolated RS232 host communications port, isolated RS485 network interface and 16 input channels for Voltage, Thermocouples and 4-20mA Transducers. Local expansion bus. For use with 7020/21/31/35/36/50 scanner modules.

## **The Datascan Instant 32 channel system consists of the following hardware:**

32 channel non-expandable Measurement Processor. Including processor, battery backed RAM, 14/16 bit ADC, isolated RS232 host communications port, 32 input channels for Voltage, Thermocouples and 4-20mA Transducers.